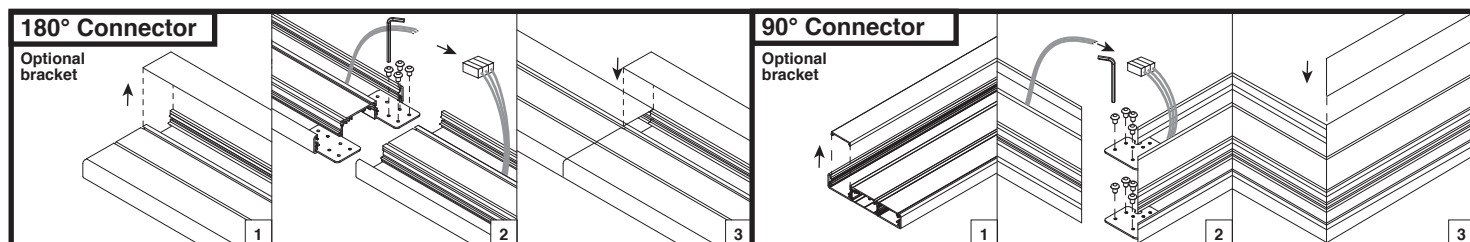
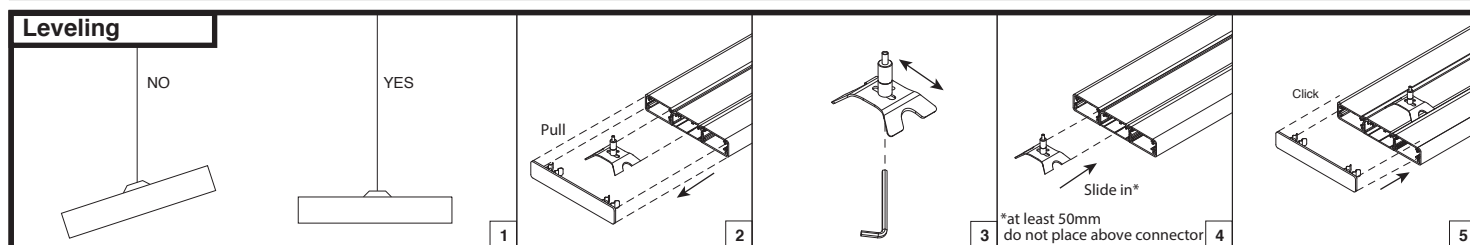
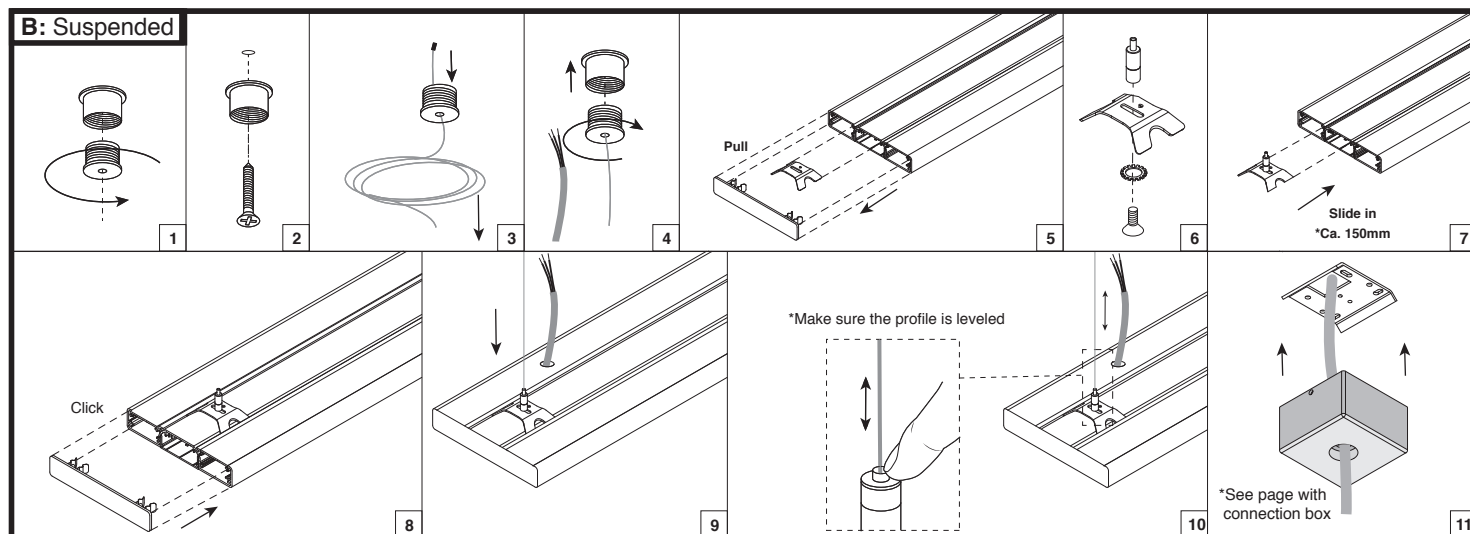
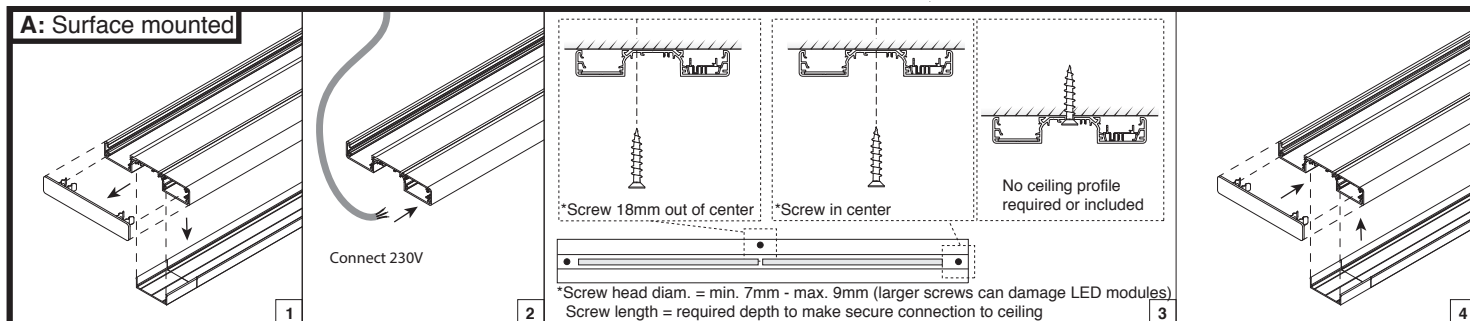


LEDLiner 170

DOXIS
LIGHTING FACTORY



A) Surface Mounted

1. Remove PC cover + end cap
2. Connect 230V
3. Fix profile to ceiling using screws
Only use pre-drilled holes
Respect screw dimensions
4. Place PC cover + end cap

180°+90° Connector

1. Remove top cover (suspended only)
2. Connect power
Place pieces against each other
Fix connector bracket using screws (suspended only)
3. Place top cover

B) Suspended

1. Disassemble ceiling fixation
2. Fix ceiling fixation to ceiling using screws
3. Pull steel wire through bottom part of ceiling fixation
4. Reassemble ceiling fixation
5. Remove end cap / suspension bracket
6. Fix wiregripper onto suspension bracket
7. Slide suspension brackets into profile
Move bracket to desired location (>50mm from edge)
Fix bracket with set screw
(Bracket cannot be placed above connectors)
8. Place end cap back
9. Put wire into wiregripper
10. Adjust height and cut of excess wire
11. Place housing over bracket and reassemble
See page with mounting brackets

Leveling

1. Level profile
2. Remove end cap / suspension bracket
3. Move wiregripper on suspension bracket
4. Slide suspension brackets into profile
5. Place end cap back

⚠ Attention!!

Be very careful with LEDs when working on product! Do not touch LEDs
Do not let tools come in contact with LEDs
Warranty void if LED contact has taken place

Only to be installed by a qualified electrician
Always make sure power is completely switched off when working on profile

Always make sure suspension cables are placed perpendicular to both the ceiling and the profile itself

When connecting multiple parts of a structure always make sure LED polarity is respected. This means connecting white to white and grey to grey wires